

**SUPLEMENTO A LA AIP DE LA REPÚBLICA ARGENTINA**

Dirección AFS: SABBVNYX  
Tel (54 11) 5941 3011  
dianac@anac.gov.ar

DIRECCIÓN NACIONAL DE INSPECCIÓN DE NAVEGACIÓN AÉREA  
DIRECCIÓN REGULACIÓN NORMAS Y PROCEDIMIENTOS  
DEPARTAMENTO INFORMACIÓN AERONÁUTICA

AZOPARDO 1405 Piso 3º  
(C1107ADY) – C.A.B.A.  
ARGENTINA

**A 04/2018**

09 de Noviembre

**A 04. EZEIZA / MINISTRO PISTARINI (SAEZ) – MODIFICACIONES EN CARTA IAC Y TABLA DE CODIFICACIÓN / CHANGES IN IAC CHART AND CODING TABLE.****Fecha de Efectividad/Effectiveness date: 04 de Enero/January 2018**

Reemplazar la siguiente carta IAC / Change the following IAC chart

|                 |        |                |
|-----------------|--------|----------------|
| RNP (LNAV/VNAV) | RWY 35 | DIC / DEC 2017 |
|-----------------|--------|----------------|

Por la que se adjunta / By the following

|                 |        |                |
|-----------------|--------|----------------|
| RNP (LNAV/VNAV) | RWY 35 | ENE / JAN 2018 |
|-----------------|--------|----------------|

Reemplazar las siguientes tablas de codificación / Change the following Coded Tables:

|                 |        |                |
|-----------------|--------|----------------|
| RNP (LNAV-VNAV) | RWY 11 | DIC / DEC 2017 |
| RNP (LNAV-VNAV) | RWY 29 | DIC / DEC 2017 |
| RNP (LNAV/VNAV) | RWY 35 | DIC / DEC 2017 |

Por la que se adjunta / By the following

|                 |        |                |
|-----------------|--------|----------------|
| RNP (LNAV-VNAV) | RWY 11 | DIC / DEC 2017 |
| RNP (LNAV-VNAV) | RWY 29 | DIC / DEC 2017 |
| RNP (LNAV/VNAV) | RWY 35 | ENE / JAN 2018 |

**NOTA:** Las Tablas de Codificación RNP (LNAV-VNAV) RWY 11 y 29 no sufren modificaciones.

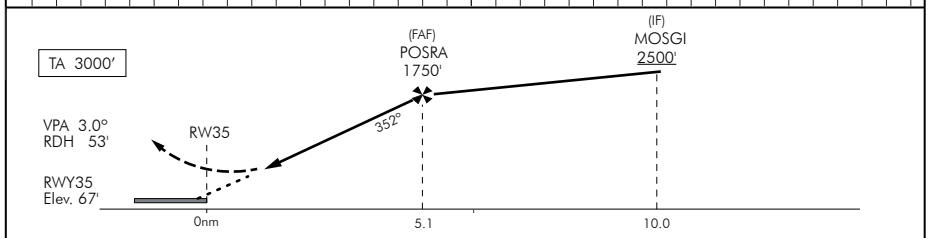
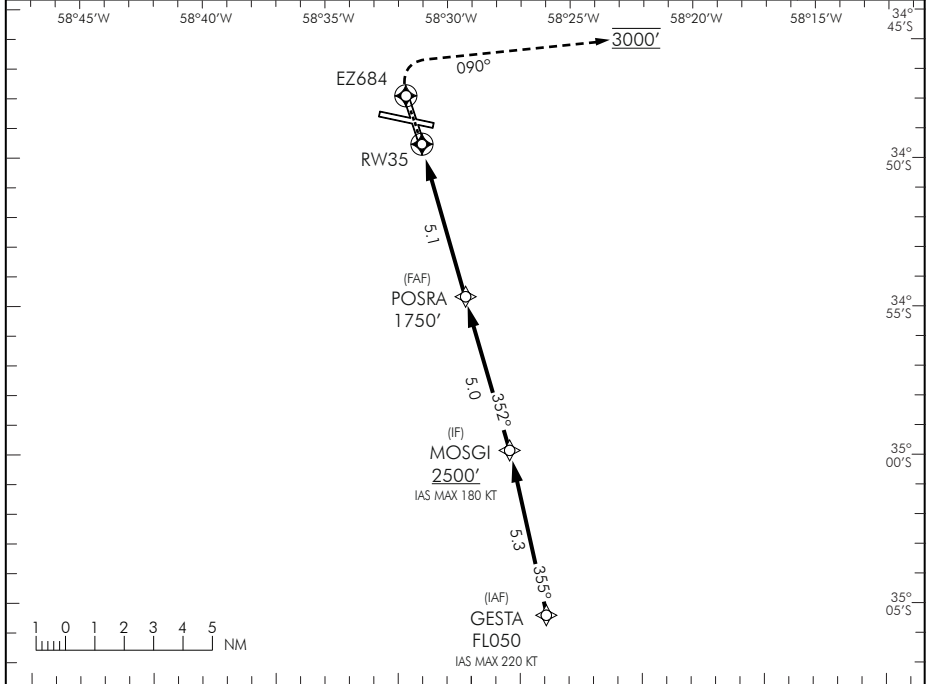
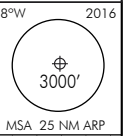
|                     |                        |
|---------------------|------------------------|
| Afecta / Affects:   | AIP VOL III (MAPRI)    |
| Duración / Lasting: | Permanente / Permanent |

ACTUALICE SU DOCUMENTACIÓN  
UPDATE YOUR DOCUMENTS

DEJADA INTENCIONALMENTE EN BLANCO /  
LEFT INTENTIONALLY IN BLANK

|                |                               |   |   |                             |
|----------------|-------------------------------|---|---|-----------------------------|
| ATIS<br>127.80 | EZEIZA APP<br>119.90 120.45   | EZEIZA TWR<br>118.60 118.05               | EZEIZA GND<br>121.75                      | EMERG<br>121.50             |
| RNP            | FINAL APCH CRS<br><b>352°</b> | MNM ALTD POSRA<br><b>1750'</b><br>(1683') | LNAV/VNAV DA (H)<br><b>384'</b><br>(317') | AD Elev 67'<br>THR Elev 67' |

Aprox. frustrada: ASC para 3000', en curso a EZ684, virar por DERECHA rumbo 090°, seguir instrucciones ATC.  
Missed approach: Climb to 3000', proceed on track to EZ684, turn RIGHT heading 090°, follow ATC instructions.  
Para sistemas Baro/VNAV no compensados, aproximación no autorizada debajo de -5°C o sobre 40°C.  
For uncompensated Baro/VNAV systems, approach not authorized below -5°C or above 40°C



|   |                |      |             |      |                 |      |             |   |
|---|----------------|------|-------------|------|-----------------|------|-------------|---|
| DIRECTA PISTA 35 / Straight in RWY 35   |                |      |             |      |                 |      |             | Circulación visual N.A.<br>Circle to land: N.A. |
| CAT   | LNAV / VNAV    |      |             |      | LNAV            |      |             |   |
|   | DA <b>384'</b> |      | DH 317'     |      | MDA <b>430'</b> |      | MDH 363'    |   |
|   | VIS ALS        |      | VIS SIN ALS |      | VIS ALS         |      | VIS SIN ALS |   |
| A   | 800 M          |      | 1400 M      |      | 1200 M          |      | 1900 M      |   |
| B   |                |      |             |      | 1400 M          |      | 2100 M      |   |
| C   |                |      |             |      |                 |      |             |   |
| D   |                |      |             |      |                 |      |             |   |
| Se requiere certificación:<br>Certification required:<br>RNP APCH (LNAV), ó<br>RNP APCH (LNAV/VNAV) |                |      |             |      |                 |      |             |   |
| GS KT   | 90             | 100  | 110         | 120  | 130             | 140  | 150         |   |
| FAF - THR35 5.1 NM  | 3:24           | 3:03 | 2:47        | 2:33 | 2:21            | 2:11 | 2:02        |   |
| FPM (3.00")   | 478            | 531  | 584         | 637  | 690             | 743  | 796         |   |

Cambios: Nuevo Procedimiento. Changes: New Procedure.

DIRECCIÓN REGULACIÓN, NORMAS Y PROCEDIMIENTOS - DINNA

DEJADA INTENCIONALMENTE EN BLANCO /  
LEFT INTENTIONALLY IN BLANK

| EZEIZA MINISTRO PISTARINI (SAEZ) RNP RWY 11 (LNAV-VNAV) |              |            |                 |                  |       |            |                 |                  |              |                 |          |           |     |                  |
|---|--------------|------------|-----------------|------------------|-------|------------|-----------------|------------------|--------------|-----------------|----------|-----------|-----|------------------|
| N° Serie  | Identif. WPT | Path Term. | Coordenada LAT  | Coordenada LONG  | FB/FO | Dist. (NM) | Curso M° (°)    | Dirección viraje | Altitud (FT) | límite Vel (Kt) | Var Mag. | VPA       | RNP | Especif. de Nav. |
| 010   | INBOD        | IF         | S 34°47'00.593" | W 058°45'01.906" | FB    | --         | --              | --               | + 2500'      | -180            | 8° W     | --        | 1.0 | RNP APCH         |
| 020   | VUPAN        | TF         | S 34°48'04.937" | W 058°39'06.099" | FB    | 5.0        | 110.4° (102.4°) | --               | 1700'        | --              | 8° W     | --        | 1.0 | RNP APCH         |
| 030   | RW11         | TF         | S 34°49'08.380" | W 058°33'12.430" | FO    | 5.0        | 110.3° (102.3°) | --               | 118'         | --              | 8° W     | -3.0°/56' | 0.3 | RNP APCH         |
| 040   | --           | CA         | --              | --               | --    | --         | 110.3° (102.3°) | --               | 900'         | --              | 8° W     | --        | 1.0 | RNP APCH         |
| 050   | NEVLO        | DF         | S 34°58'00.924" | W 058°20'10.888" | FB    | --         | --              | R                | 3000'        | --              | 8° W     | --        | 1.0 | RNP APCH         |
| 060   | NEVLO        | HM         | S 34°58'00.924" | W 058°20'10.888" | FO    | 4.0        | 016.0° (196.0°) | R                | 3000'        | -210            | 8° W     | --        | 1.0 | RNP APCH         |
| 010   | ARSOT        | IF         | S 34°45'37.000" | W 058°53'51.000" | FB    | --         | --              | --               | FLOSO        | -220            | 8° W     | --        | 1.0 | RNP APCH         |
| 020   | INBOD        | TF         | S 34°47'00.593" | W 058°45'01.906" | FB    | 7.4        | 108.9° (100.9°) | --               | + 2500'      | -180            | 8° W     | --        | 1.0 | RNP APCH         |

| EZEIZA MINISTRO PISTARINI (SAEZ) RNP RWY 29 (LNAV-VNAV) |              |            |                 |                  |       |            |                 |                  |              |                 |          |           |     |                  |
|---|--------------|------------|-----------------|------------------|-------|------------|-----------------|------------------|--------------|-----------------|----------|-----------|-----|------------------|
| N° Serie  | Identif. WPT | Path Term. | Coordenada LAT  | Coordenada LONG  | FB/FO | Dist. (NM) | Curso M° (°)    | Dirección viraje | Altitud (FT) | límite Vel (Kt) | Var Mag. | VPA       | RNP | Especif. de Nav. |
| 010   | PAPAP        | IF         | S 34°51'39.079" | W 058°19'09.051" | FB    | --         | --              | --               | + 2500'      | -180            | 8° W     | --        | 1.0 | RNP APCH         |
| 020   | OPL0M        | TF         | S 34°50'35.708" | W 058°25'05.371" | FB    | 5.0        | 290.2° (282.2°) | --               | 1700'        | --              | 8° W     | --        | 1.0 | RNP APCH         |
| 030   | RW29         | TF         | S 34°49'31.30"  | W 058°31'05.71"  | FO    | 5.1        | 290.1° (282.1°) | --               | 116'         | --              | 8° W     | -3.0°/50' | 0.3 | RNP APCH         |
| 040   | --           | CA         | --              | --               | --    | --         | 290.1° (282.1°) | --               | 1000'        | --              | 8° W     | --        | 1.0 | RNP APCH         |
| 050   | NEVLO        | DF         | S 34°58'00.924" | W 058°20'10.888" | FB    | --         | --              | L                | 3000'        | --              | 8° W     | --        | 1.0 | RNP APCH         |
| 060   | NEVLO        | HM         | S 34°58'00.924" | W 058°20'10.888" | FO    | 4.0        | 016.0° (196.0°) | R                | 3000'        | -210            | 8° W     | --        | 1.0 | RNP APCH         |
| 010   | ISUNO        | IF         | S 34°52'42.160" | W 058°13'12.579" | FB    | --         | --              | --               | 3000'        | -220            | 8° W     | --        | 1.0 | RNP APCH         |
| 020   | PAPAP        | TF         | S 34°51'39.079" | W 058°19'09.051" | FB    | 5.0        | 290.1° (282.1°) | --               | + 2500'      | -180            | 8° W     | --        | 1.0 | RNP APCH         |
| 010   | VOVKA        | IF         | S 34°45'14.110" | W 058°16'25.911" | FB    | --         | --              | --               | 3000'        | -220            | 8° W     | --        | 1.0 | RNP APCH         |
| 020   | PAPAP        | TF         | S 34°51'39.079" | W 058°19'09.051" | FB    | 6.8        | 207.4° (199.4°) | --               | + 2500'      | -180            | 8° W     | --        | 1.0 | RNP APCH         |
| 010   | NEVLO        | IF         | S 34°58'00.924" | W 058°20'10.888" | FB    | --         | --              | --               | 3000'        | -220            | 8° W     | --        | 1.0 | RNP APCH         |
| 020   | PAPAP        | TF         | S 34°51'39.079" | W 058°19'09.051" | FB    | 6.4        | 015.6° (007.6°) | --               | + 2500'      | -180            | 8° W     | --        | 1.0 | RNP APCH         |

**EZEIZA MINISTRO PISTARINI (SAEZ) RNP RWY 35 (LNAV-VNAV)**

| N° Serie | Identif. WPT | Path Term. | Coordenada LAT   | Coordenada LONG   | FB/ FO | Dist. (NM) | Curso M° (°)    | Dirección viraje | Altitud (FT) | Límite Vel (KT) | Var Mag. | VPA       | RNP | Especif. de Nav. |
|----------|--------------|------------|------------------|-------------------|--------|------------|-----------------|------------------|--------------|-----------------|----------|-----------|-----|------------------|
| 010      | MOSGI        | IF         | S 34°59'42.2235" | W 058°28'08.1269" | FB     | --         | --              | --               | + 2500'      | -180            | 8° W     | --        | 1,0 | RNP APCH         |
| 020      | POSRA        | TF         | S 34°54'53.3942" | W 058°29'48.8025" | FB     | 5,00       | 352,0° (344,0°) | --               | 1750'        | --              | 8° W     | --        | 1,0 | RNP APCH         |
| 030      | RW35         | TF         | S 34°49'57.3200" | W 058°31'31.7900" | FO     | 5,12       | 352,0° (344,0°) | --               | 120'         | --              | 8° W     | -3,0°/53' | 0,3 | RNP APCH         |
| 040      | EZ684        | CF         | S 34°48'01.7698" | W 058°32'11.9257" | FO     | 2,00       | 352,0° (344,0°) | --               | --           | --              | 8° W     | --        | 1,0 | RNP APCH         |
| 050      | --           | CA         | --               | --                | --     | --         | 090,0° (082,0°) | R                | 3000'        | --              | 8° W     | --        | 1,0 | RNP APCH         |
| 010      | GESTA        | IF         | S 35°04'52.000"  | W 058°26'44.000"  | FB     | --         | --              | --               | FL050        | -220            | 8° W     | --        | 1,0 | RNP APCH         |
| 020      | MOSGI        | TF         | S 34°59'42.2235" | W 058°28'08.1269" | FB     | 5,28       | 355,4° (347,4°) | --               | + 2500'      | -180            | 8° W     | --        | 1,0 | RNP APCH         |

4 ENERO 2018

DEPARTAMENTO INFORMACIÓN AERONÁUTICA

SUP AIRAC 4/18